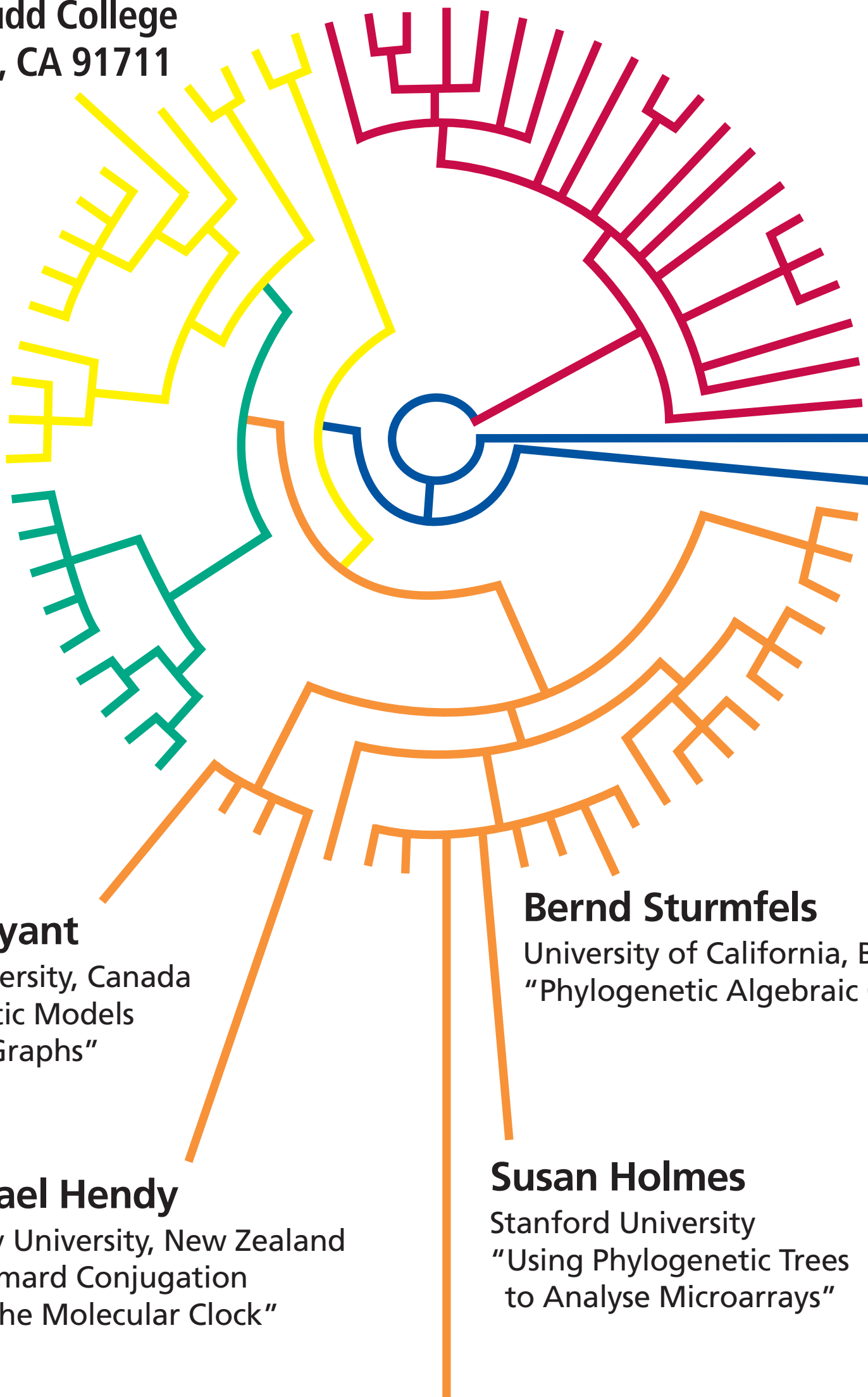


Saturday, October 23, 2004
Harvey Mudd College
Claremont, CA 91711



David Bryant

McGill University, Canada
"Probabilistic Models
for Splits Graphs"

Bernd Sturmfels

University of California, Berkeley
"Phylogenetic Algebraic Geometry"

Michael Hendy

Massey University, New Zealand
"Hadamard Conjugation
and The Molecular Clock"

Susan Holmes

Stanford University
"Using Phylogenetic Trees
to Analyse Microarrays"

Harvey Mudd College Mathematics Conference Series

**GEOMETRY, ALGEBRA AND
PHYLOGENETIC TREES**

The Department of Mathematics at Harvey Mudd College will host its 6th annual Mathematics Conference on Saturday, October 23, 2004, 9 A.M. to 5 P.M., in Claremont, Calif. This year's topic is geometry, algebra and phylogenetic trees. Faculty, post-doctoral fellows and students are invited to attend. For information about this one-day conference, including a schedule and abstracts of the talks and poster session, travel support for students and recent Ph.D.s, on-line registration and directions to Harvey Mudd College and Claremont, please view the conference web page: <http://www.math.hmc.edu/baldyconf/>. Harvey Mudd College is located about 35 miles east of central Los Angeles, in the foothills of the San Gabriel Mountains.

For information regarding the conference, please contact organizer Professor Francis E. Su. E-mail: su@math.hmc.edu.

Our graphic was inspired by the research of HMC Professor of Biology Catherine McFadden.

HARVEY MUDD
COLLEGE
<http://www.math.hmc.edu/baldyconf/>